

Perfect Commerce Browser Settings

Contents

1	INTERNET EXPLORER	2
1.1	SOE COMPUTERS	2
1.2	NON-SOE COMPUTERS	2
1.2.1	Trusted Sites	2
2	CHROME	6
2.1	BOTH SOE AND NON-SOE COMPUTERS	6
3	FIREFOX	8
4	SAFARI	11
4.1	BOTH SOE AND NON-SOE COMPUTERS	11
5	NOTES FOR TEST SYSTEMS – FIREFOX ONLY	13
6	PERFECT COMMERCE SUPPORTED BROWSERS	14

Perfect Commerce Browser Settings

1 Internet Explorer

1.1 SOE Computers

The browser settings are controlled by UNSW IT so there is nothing to be done by the individual user.

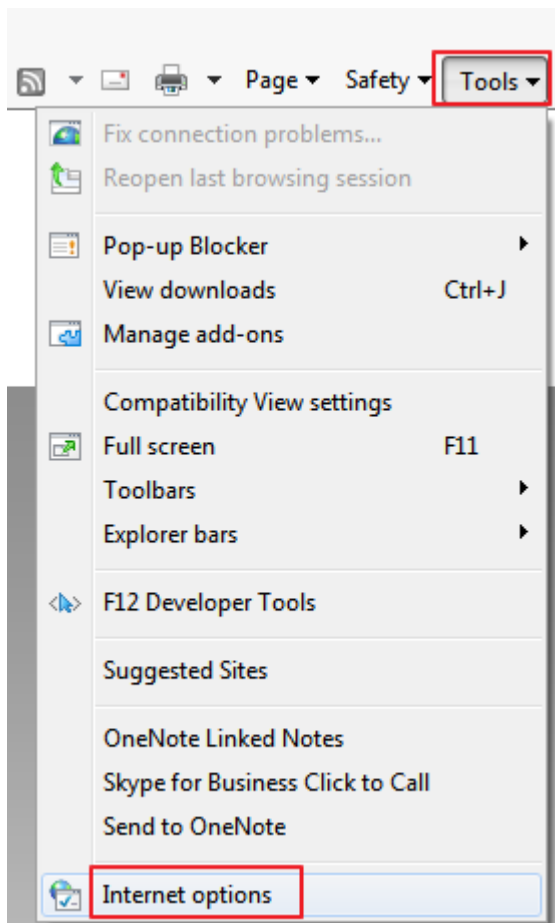
1.2 Non-SOE Computers

On NON-SOE computers please ensure the following Options are configured as shown below:

1.2.1 Trusted Sites

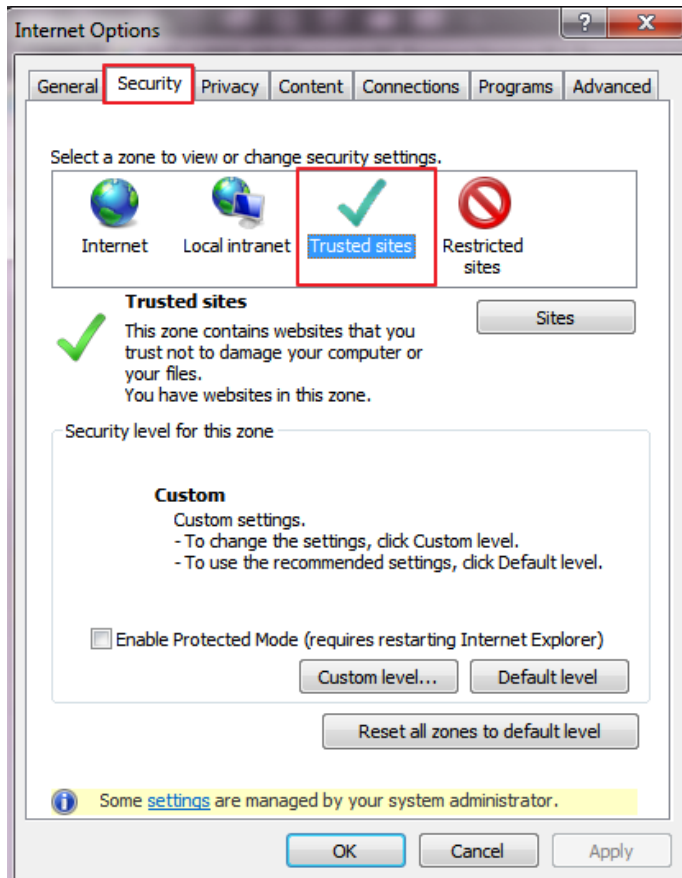
Navigate to:

Tools > Internet Options



Select the Security tab and click on the Trusted sites zone:

Perfect Commerce Browser Settings

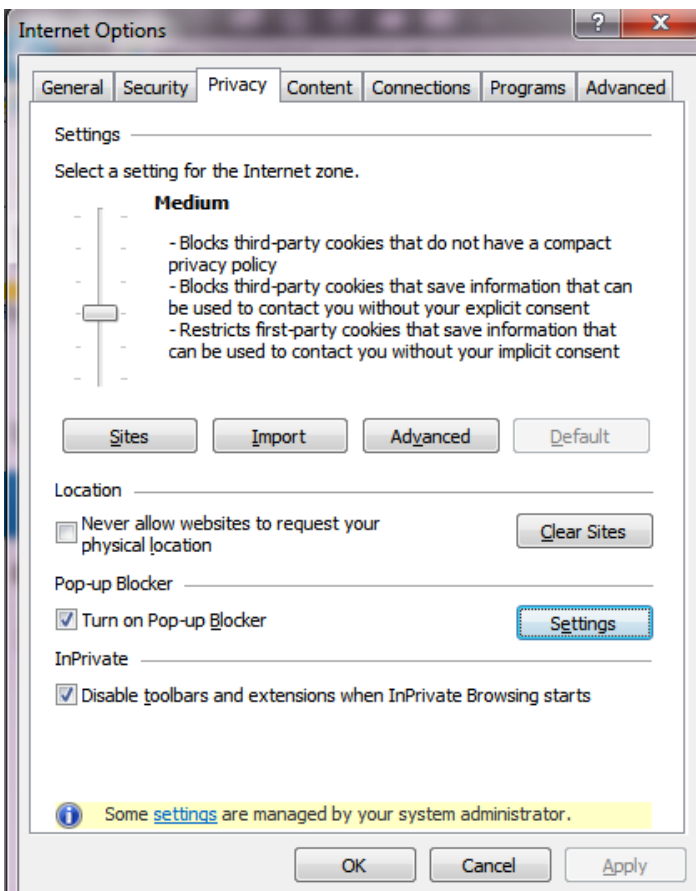
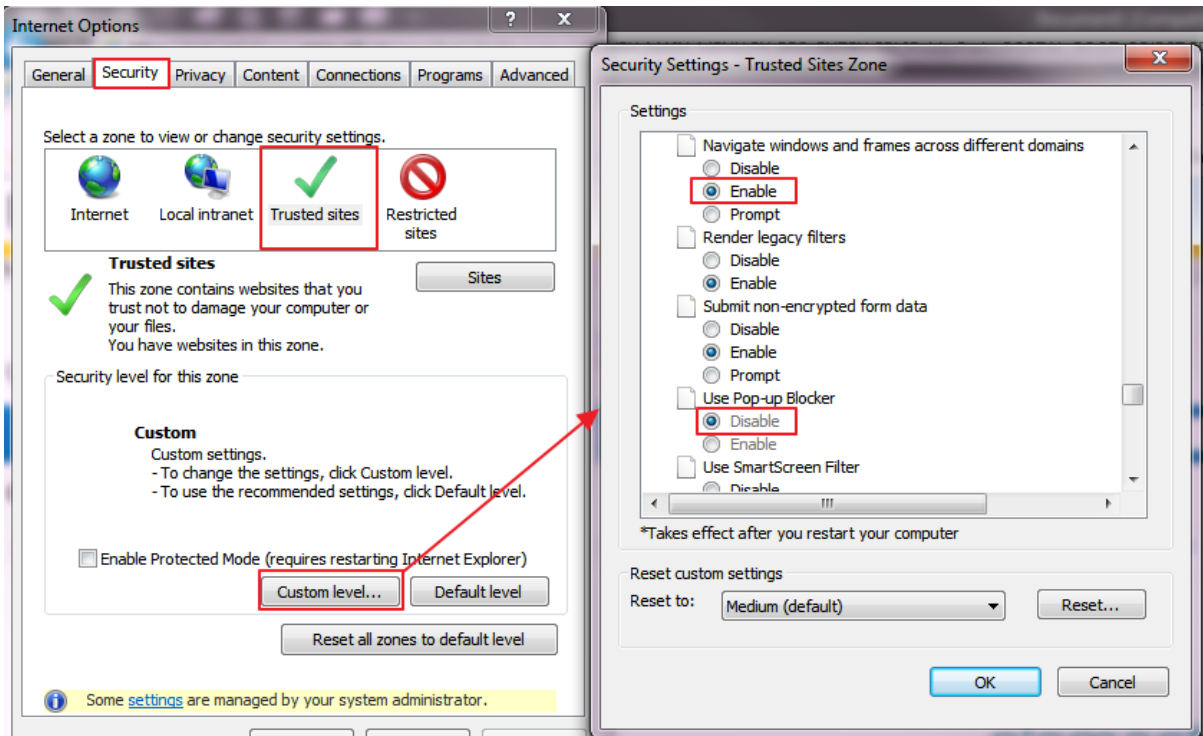


Click on the Sites button and add the following URLs to the Trusted Sites zone:

https://econtent.hubwoo.com
https://unsw.perfect.com
http://*.cos.net.au
https://*.cos.net.au
https://*.sigmaaldrich.com
https://*.thermofisher.com
https://*.thermofisher.co.nz
https://*.vwr.com
https://*.blackwoods.com.au
http://*.rs-online.com
https://*.insight.com
https://*.premierfarnell.com
https://*.dell.com
https://*.hp.com
https://*.hubspan.net
http://*.electrocomponents.com
https://*.sterlingcommerce.com

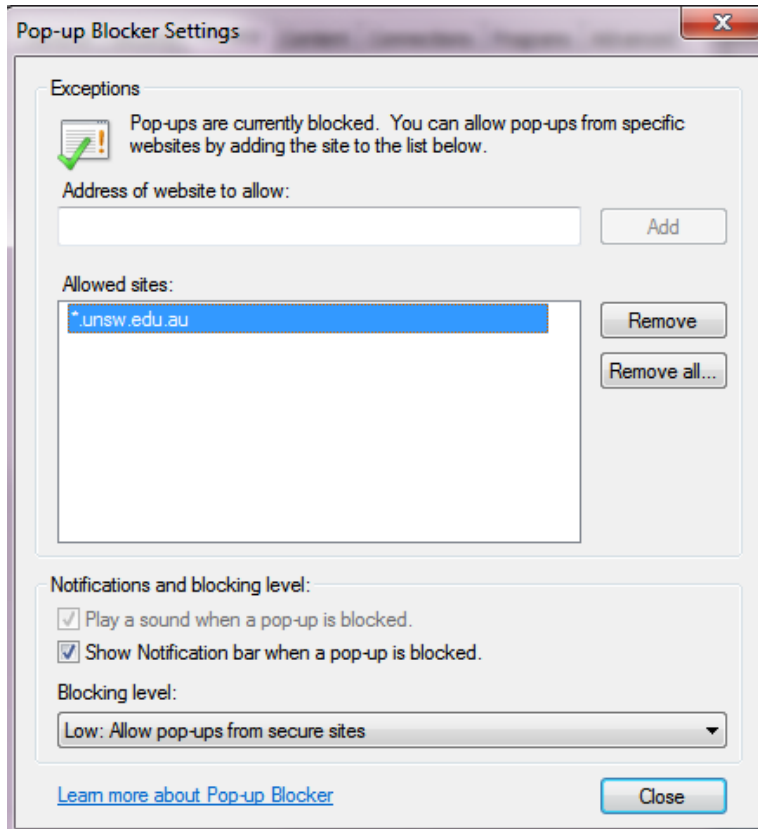
On the Trusted Sites Custom Settings page ensure the following are set up as shown below:

Perfect Commerce Browser Settings



Perfect Commerce Browser Settings

Don't think we need the following but add anyway if it is not already there:



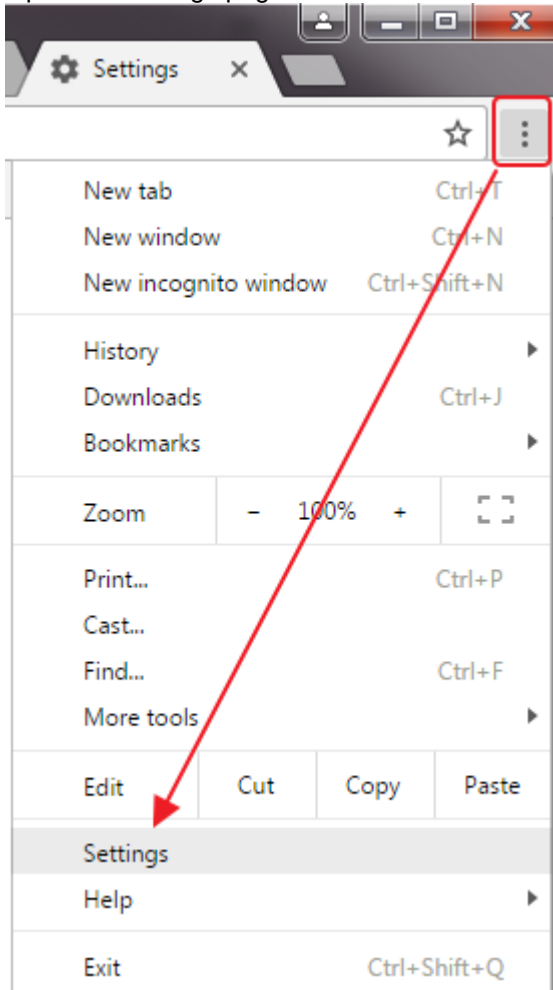
Perfect Commerce Browser Settings

2 Chrome

2.1 Both SOE and Non-SOE Computers

Update the Pop-Up Blocker Exception as shown below.

Open the Settings page:



Scroll to the bottom of the page and select:

[Show advanced settings...](#)

Click on the [Content setting](#) button and scroll down until you see:

Perfect Commerce Browser Settings

Content settings

Pop-ups

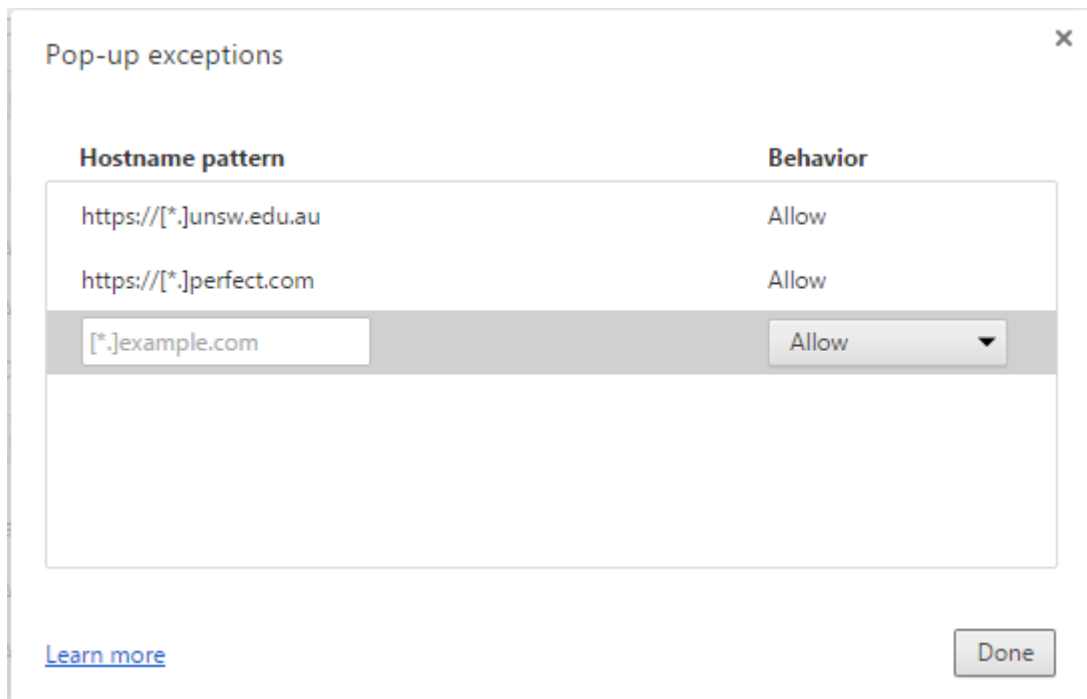
- Allow all sites to show pop-ups
- Do not allow any site to show pop-ups (recommended)

[Manage exceptions...](#)

Click on the *Manage exceptions* button and add the following hostname:

Enter: [https://\[*\].unsw.edu.au](https://[*].unsw.edu.au) and select Allow

Enter: [https://\[*\].perfect.com](https://[*].perfect.com) and select Allow

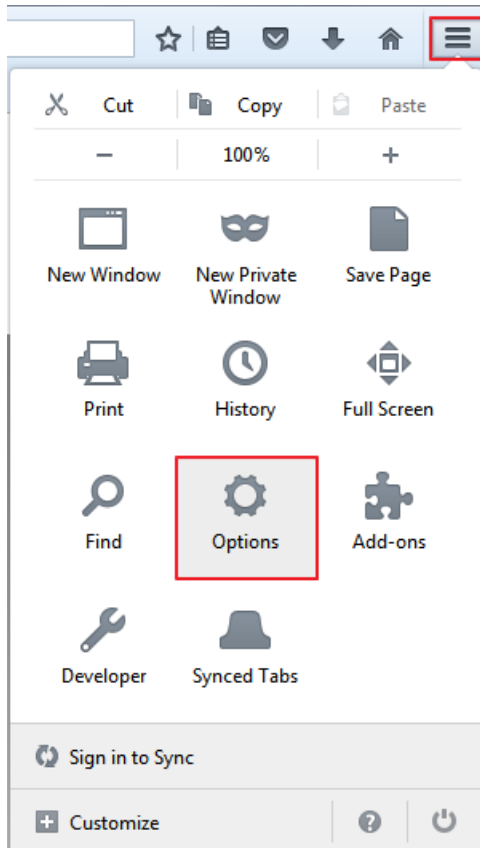


Click on Done and Done again to save the settings.

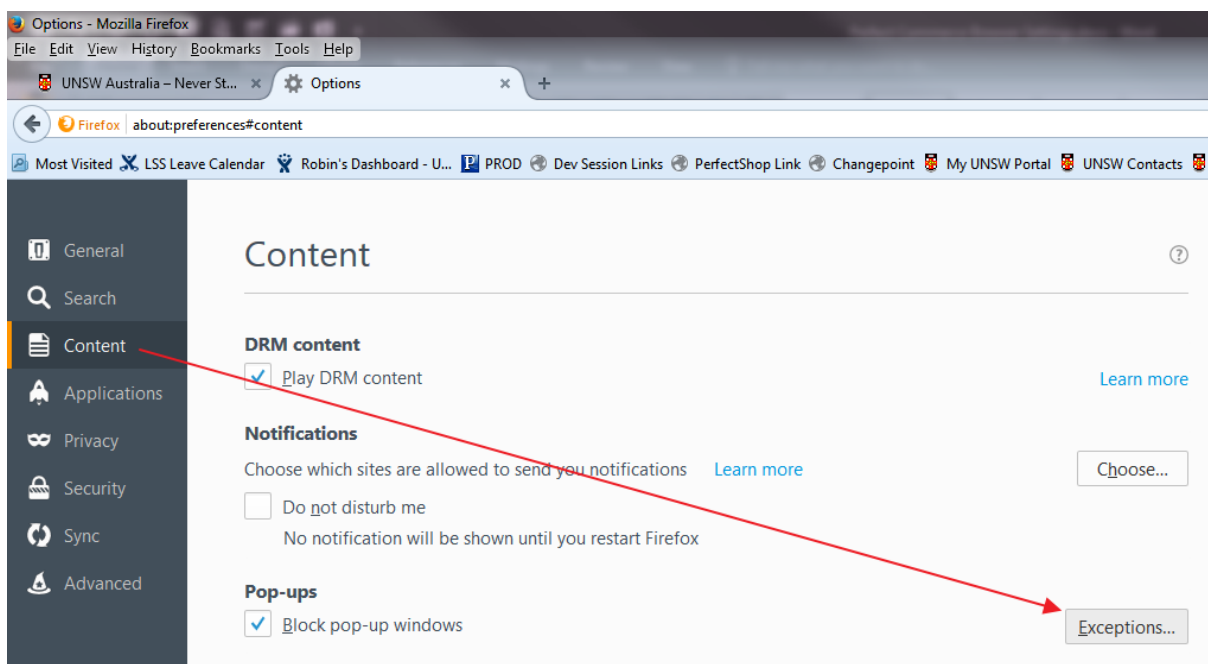
Perfect Commerce Browser Settings

3 Firefox

Update the Pop-Up Blocker exceptions by opening the Options page as follows:



Select Content from the Menu:



Perfect Commerce Browser Settings

Then click on the Exceptions... button:

Enter: <https://finance.nss.unsw.edu.au>

Allowed Sites - Pop-ups ×

You can specify which websites are allowed to open pop-up windows. Type the exact address of the site you want to allow and then click Allow.

Address of website:

Site	Status
------	--------

and select Allow:

Perfect Commerce Browser Settings

Allowed Sites - Pop-ups [X]

You can specify which websites are allowed to open pop-up windows. Type the exact address of the site you want to allow and then click Allow.

Address of website:

Allow

Site	Status
https://finance.nss.unsw.edu.au	Allow

Remove Site Remove All Sites

Cancel Save Changes

Also add: <https://unsw.perfect.com>

Then click on Save Changes.

Close the Options tab.

Perfect Commerce Browser Settings

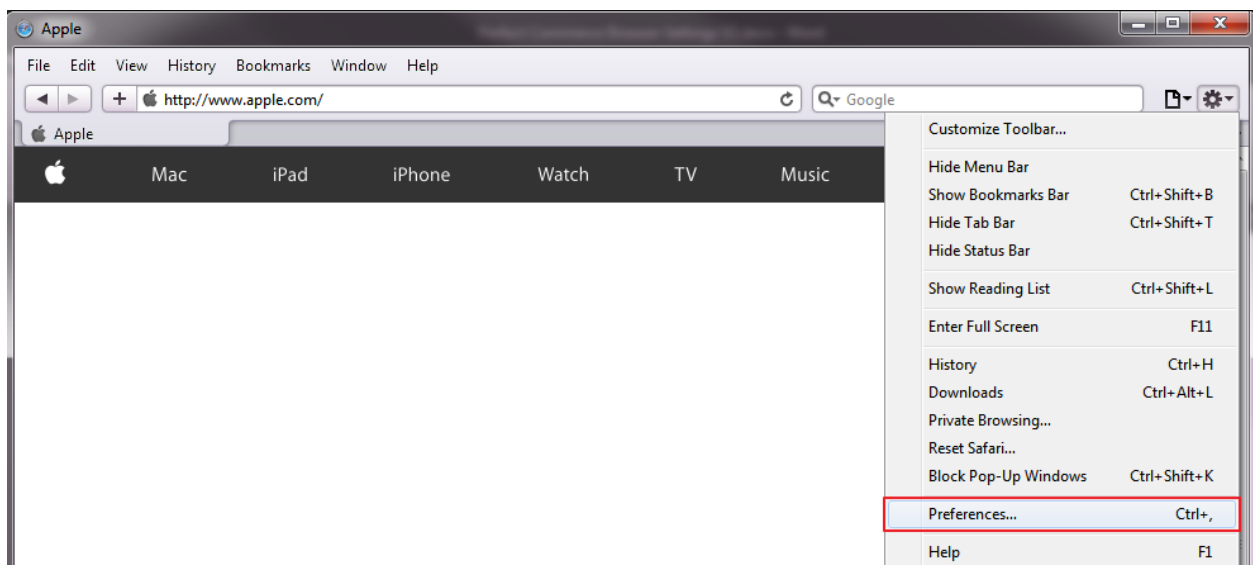
4 Safari

4.1 Both SOE and Non-SOE Computers

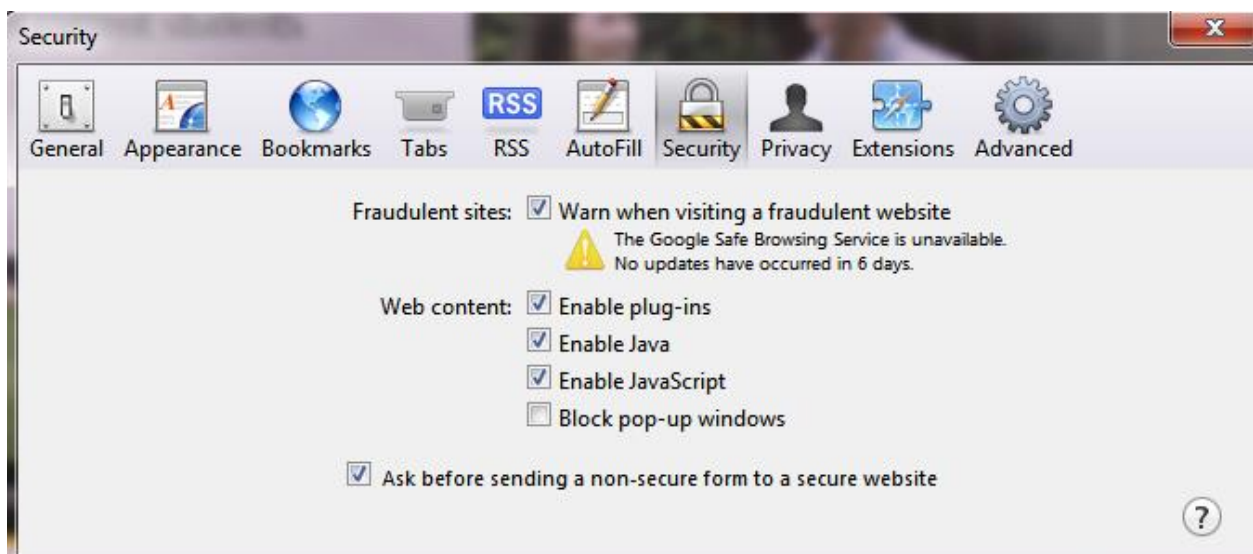
Note: Safari is NOT Supported by Perfect Commerce so UNSW IT will also not support this browser if even if you have changed the settings below you are still having problems. In this case, please use one of the other supported browsers.

Update the Pop-Up Blocker settings as shown below:

Navigate to Preferences...



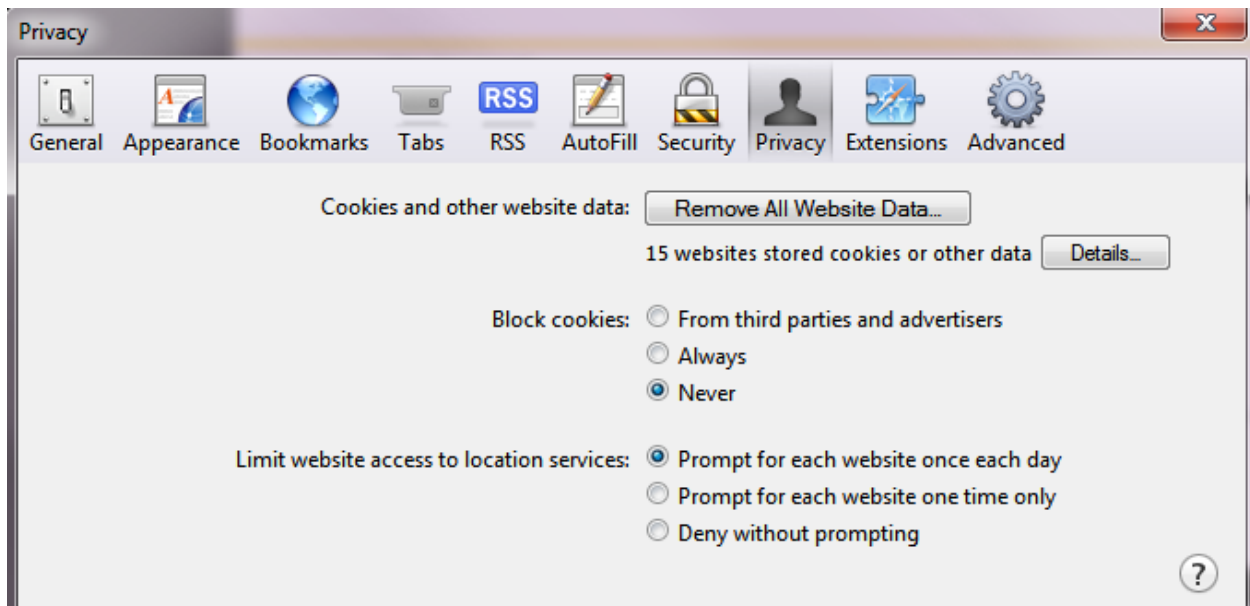
Click on the Security tab and ensure Block pop-up windows is unticked as shown below:



Also, make sure the other Web content settings are set as above.

On the Privacy tab, ensure Cookies are allowed:

Perfect Commerce Browser Settings



Please note that it is recommended that MAC Users use Chrome rather than Safari.

Perfect Commerce Browser Settings

5 Notes for Test Systems – Firefox Only

Firefox is more particular than Chrome and Internet Explorer for Pop-Up Blocker exceptions in that it requires a specific URL rather than one with a wildcard.

So, if the user is performing User Acceptance Testing using Firefox they will also need to add the following URL to the Pop-Up Blocker Exceptions:

<https://uat-psf.unsw.edu.au>

For other Test or Development environments the user should add the appropriate URL for that system, eg.

<https://test-psf-t2.nss.unsw.edu.au>

<https://test-psf-n1.nss.unsw.edu.au>

<https://dev-psf-v1.nss.unsw.edu.au>

<https://test-psf-t1.nss.unsw.edu.au>

Perfect Commerce Browser Settings

6 Perfect Commerce Supported Browsers

This is the latest version of the document describing which browsers are supported when using PerfectShop and The Business Network (TBN) dated December 2016.



Hubwoo System
Requirements Decer

The following extract from this document shows the browsers currently supported:

System Requirements (PerfectShop & TBN)

Supported Browsers

Browser	The Business Network Portal	Catalog Manager	Search
IE 11			
IE 10			
IE 9 (until Dec. 31, 2016)**			
IE 8 (until Dec. 31, 2016)**			
IE 7 & Below (until Dec. 31, 2016)**			
Firefox Rapid release cycle			
Firefox Extended Support release cycle			
Chrome release cycle			

Add 'Hubwoo.com' to "compatibility view settings" in IE > Tools.

**Effective December 31st 2016, Hubwoo applications will no longer support IE 9 and below versions.

Customers using these browser versions are strongly recommended to upgrade to one of the supported browsers. For customers with paid support for IE 9 and lower versions, new features may not work on their browsers after this date. For more information, please refer to Microsoft's support announcements:

<https://support.microsoft.com/en-us/lifecycle#gp/msl-ie-dotnet-an>